

Title: Sheringham Shoal and Dudgeon Offshore Wind Farm Extension Projects Environmental Statement Appendix 18.2: Flood Risk Assessment (Figures)	
PINS Document No.: 6.3.18.2	
Revision: B	
Document No.: C282-RH-Z-GA-00078	
Date:	Classification
October 2022	Final
Prepared by:	
Royal HaskoningDHV	
Approved by:	Date:
Johiris Rodriguez, Equinor	October 2022

List of Figures

Figure 18.2.1 WFD Surface Water Operational Catchments (Part 1 of 8) Figure 18.2.2 Crossing Schedule (Part 2 of 8)

Figure 18.2.3 Flood Zones – Landfall (Part 2 of 8)

Figure 18.2.4 Surface Water Flood Risk – Landfall (Part 3 of 8)

Figure 18.2.5 Flood Zones – North Norfolk (Part 3 of 8)

Figure 18.2.6 Surface Water Flood Risk – North Norfolk (Part 4 of 8)

Figure 18.2.7 Flood Zones – Bure (Part 4 of 8)

Figure 18.2.8 Surface Water Flood Risk – Bure (Part 5 of 8)

Figure 18.2.9 Flood Zones – Wensum (Part 5 of 8)

Figure 18.2.10 Surface Water Flood Risk – Wensum (Part 6 of 8)

Figure 18.2.11 Flood Zones – Yare (Part 6 of 8)

Figure 18.2.12 Surface Water Flood Risk – Yare (Part 7 of 8)

Figure 18.2.13 Onshore Substation Site – Topography (Part 7 of 8)

Figure 18.2.14 Onshore Substation Site – Flood Zones (Part 8 of 8)

Figure 18.2.15 Onshore Substation Site – Surface Water Flood Risk (Part 8 of 8)

Sheringham Shoal and Dudgeon Extension Projects

Title:
Figure 18.2.12 Surface Water Flood Risk - Yare

Document:
Environmental Statement (ES)
Appendix 18.2 Flood Risk Assessment

Application Doc. no.: 6.3.18.2

Legend:

- Order Limits
- Onshore Substation Site
- WFD River Water Bodies
- Main River
- IDB Maintained Watercourse
- Ordinary Watercourse

Environment Agency Risk of Flooding from Surface Water (RoFSW)

- High Risk – in any given year there is a chance of flooding of greater than 1 in 30 (3.3%)
- Low - in any given year there is a chance of flooding of between 1 in 1,000 (0.1%) and 1 in 100 (1%)
- Medium Risk - in any given year there is a chance of flooding of between 1 in 100 (1%) and 1 in 30 (3.3%)

WFD Surface Water Operational Catchment

- Wensum
- Yare

Crossing Schedule

- Main River - Trenchless
- Main River & Ordinary Watercourse - Trenchless
- ▲ Ordinary Watercourse - Open Cut
- Ordinary Watercourse - Trenchless



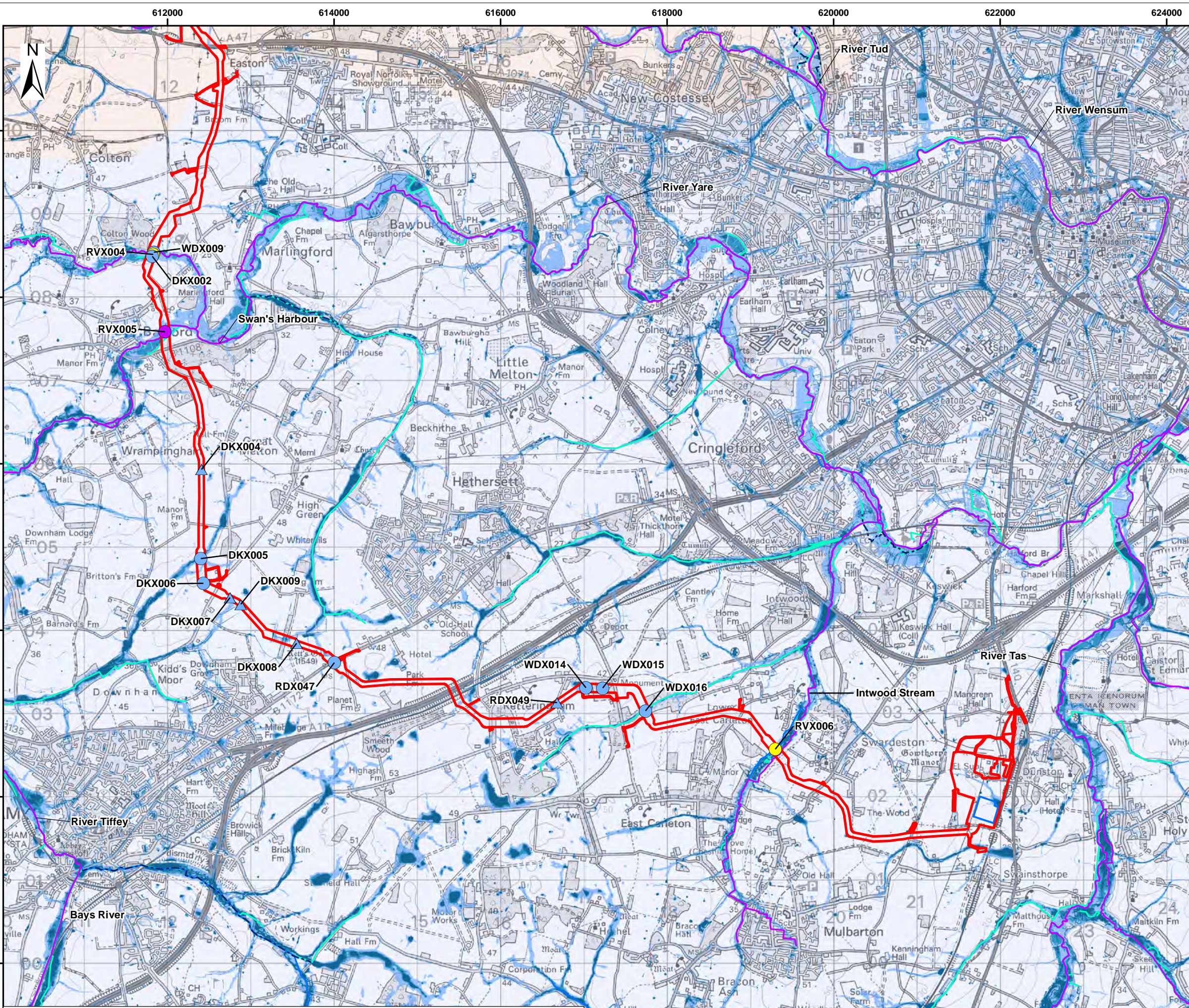
Coordinate Reference System: British National Grid
Transformation WGS84: OSGB_1936_To_WGS_1984_7

0 500 1,000 1,500 2,000 2,500 Metres
0 500 1,000 1,500 2,000 2,500 3,000 Yards

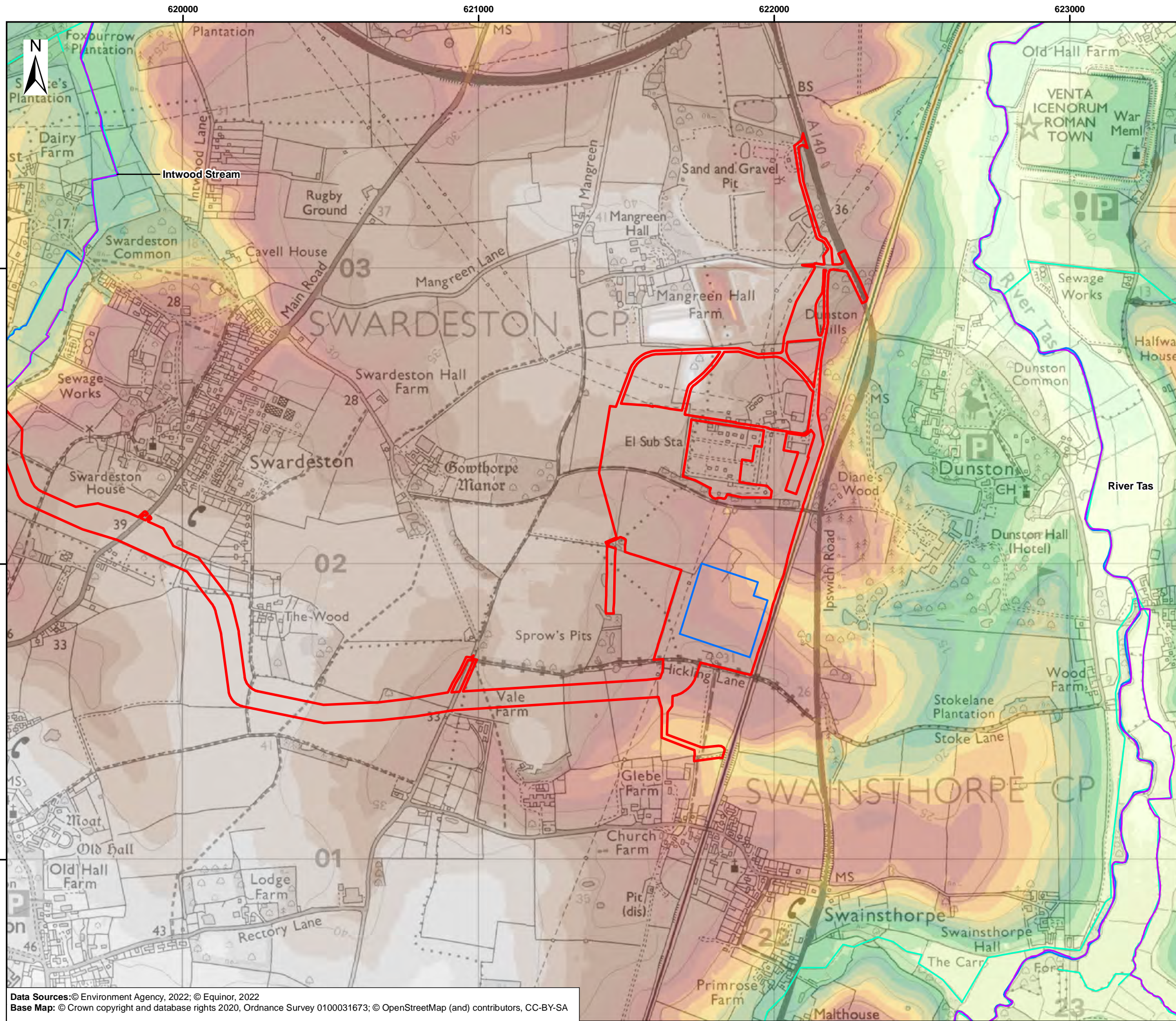
Scale: 1:45,000 Scale at size: A3

Equinor Doc. no.: C282-RH-Z-GA-00078
RHDHV Doc. no.: PB8164-RHD-ZZ-ON-DR-Z-0087

C	13/10/2022	Third Issue	GC	HW	SM
B	25/08/2022	Second Issue	FC	HW	SM
A	29/04/2022	First Issue	AZ	HW	SM
REV	DATE	STATUS	DRW	CHK	APR



Data Sources: © Environment Agency, 2021; © Equinor, 2022
Base Map: © Crown copyright and database rights 2020, Ordnance Survey 0100031673; © OpenStreetMap (and) contributors, CC-BY-SA



Sheringham Shoal and Dudgeon Extension Projects

Title:
Figure 18.2.13 Onshore Substation Site - Topography

Document:
Environmental Statement (ES)
Appendix 18.2 Flood Risk Assessment

Application Doc. no.: 6.3.18.2

- Legend:
- Order Limits
 - Onshore Substation Site
 - WFD River Water Bodies
 - Main River
 - IDB Maintained Watercourse
 - Ordinary Watercourse

Digital Terrain Model (DTM)
1m Resolution (Environment Agency, 2020)

2.1 - 4	18.1 - 20	34.1 - 36
4.1 - 6	20.1 - 22	36.1 - 38
6.1 - 8	22.1 - 24	38.1 - 40
8.1 - 10	24.1 - 26	40.1 - 42
10.1 - 12	26.1 - 28	42.1 - 44
12.1 - 14	28.1 - 30	44.1 - 46
14.1 - 16	30.1 - 32	46.1 - 48
16.1 - 18	32.1 - 34	



Coordinate Reference System: British National Grid
Transformation WGS84: OSGB_1936_To_WGS_1984_7

0 200 400 600 Meters
0 200 400 600 800 Yards

Scale: 1:12,500 Scale at size: A3

Equinor Doc. no.: C282-RH-Z-GA-00078
RHDHV Doc. no.: PB8164-RHD-ZZ-ON-DR-Z-0088

REV	DATE	STATUS	DRW	CHK	APR
B	13/10/2022	Second Issue	GC	HW	SM
A	29/04/2022	First Issue	AZ	HW	SM

Data Sources: © Environment Agency, 2022; © Equinor, 2022
Base Map: © Crown copyright and database rights 2020, Ordnance Survey 0100031673; © OpenStreetMap (and) contributors, CC-BY-SA

